

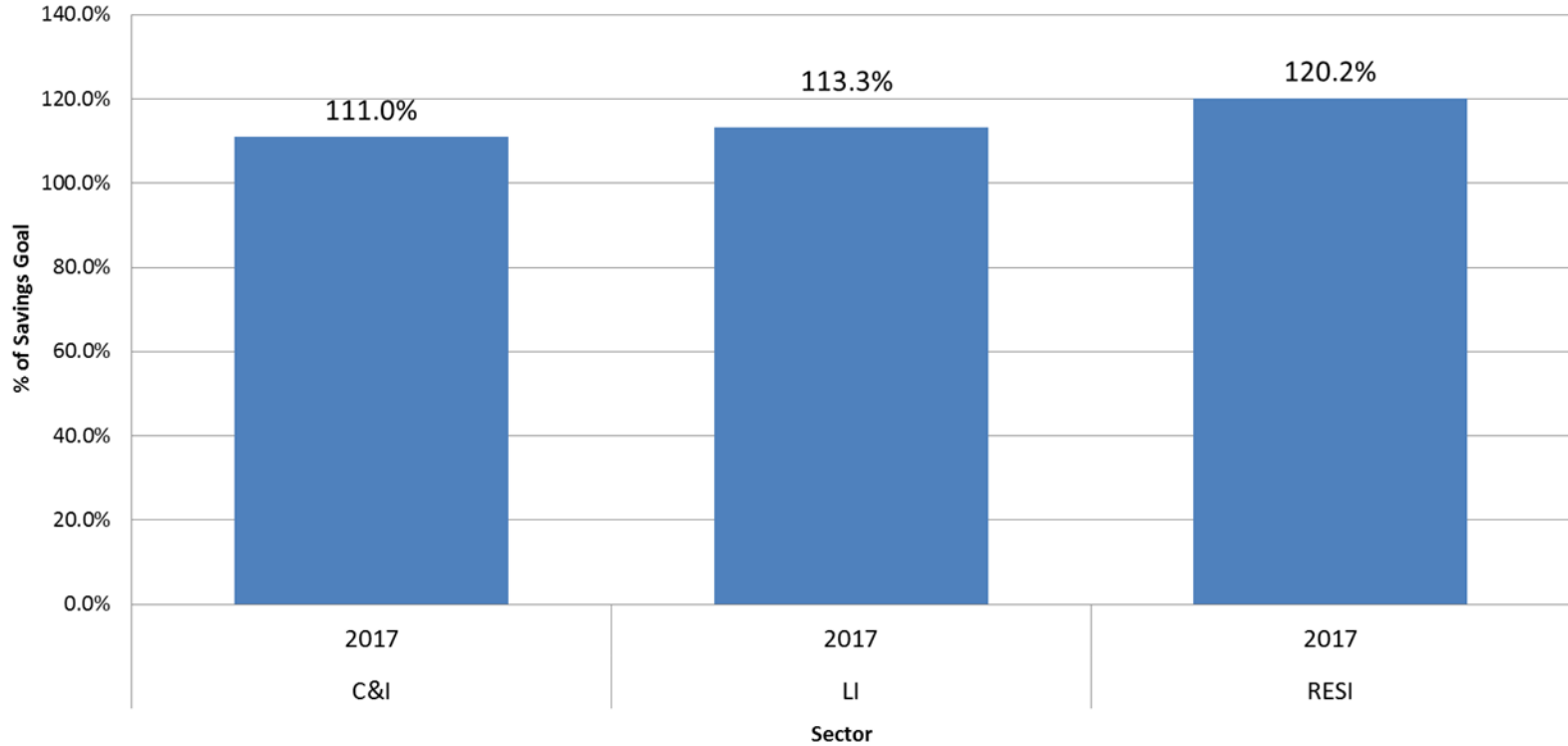
Year End 2017 Results

Collaborative – June 21st 2018

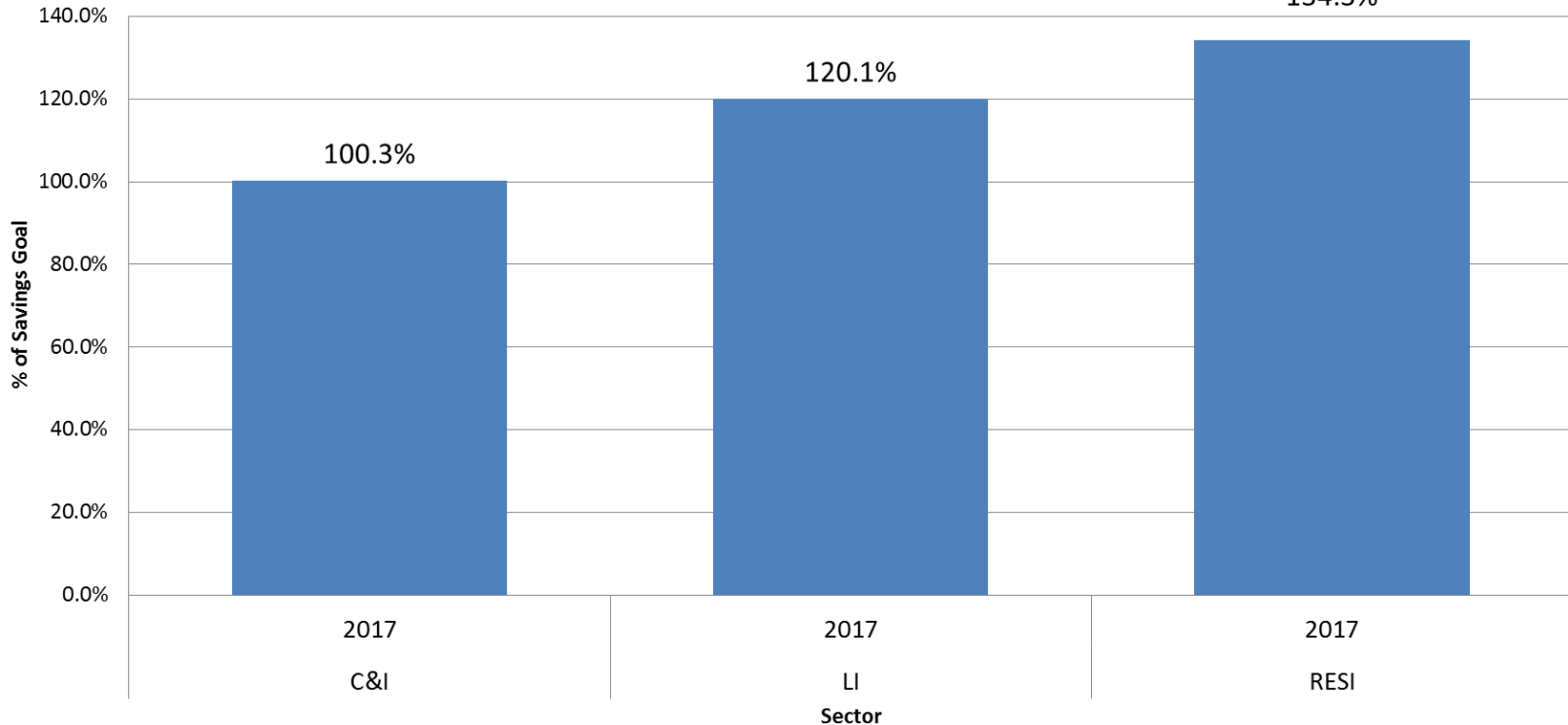


Bringing energy to life

2017 MWh Savings Goals by Sector



2017 MMBTU Savings Goals by Sector



Comparison to Filed 2017 Electric Goals				
Sector	kW	MWh	Participation	Implementation Expenses
C&I	88.5%	111.0%	103.0%	103.2%
IE	128.1%	113.3%	149.2%	92.4%
Resi	125.1%	120.2%	130.5%	97.5%
Total	102.9%	115.2%	130.6%	99.9%

Comparison to Filed 2017 Natural Gas Goals			
Sector	MMBtu	Participation	Implementation Expenses
C&I	100.3%	203.5%	93.8%
IE	120.1%	137.6%	99.7%
Resi	134.3%	97.6%	98.3%
Total	112.9%	99.9%	97.0%

RI Energy Efficiency

2017

RESIDENTIAL HIGHLIGHTS

Residential Year-End Numbers

Residential



120%

of the annual MWh
electric goal
(108,528 MWh)



134%

of the annual gas goal
(185,591 MMBtu)

Income Eligible



113%

of the annual MWh
electric goal
(8,020 MWh)



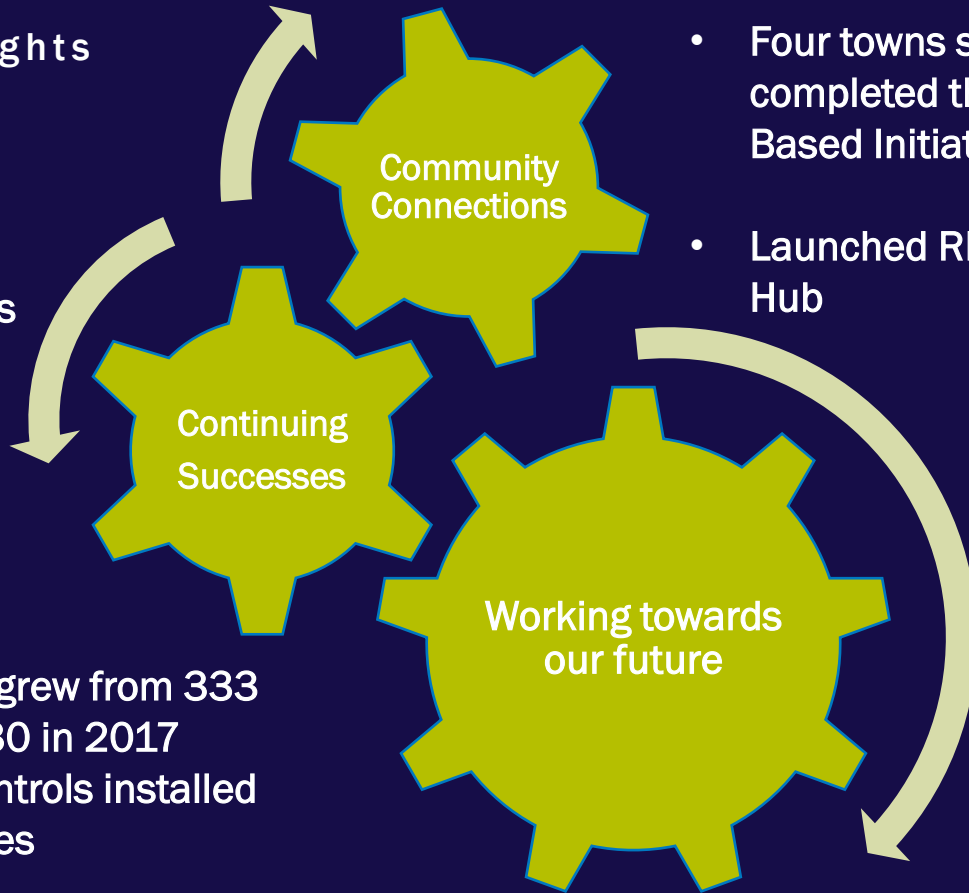
120%

of the annual gas goal
(32,242 MMBtu)

Residential Highlights

- Launched emailed High Use Alerts
- MF –central boilers installed for IE properties
- Food Bank lighting initiative
- Fridge recycling back on track

- Connected Solutions grew from 333 devices in 2016 to 930 in 2017
- Emerging Lighting Controls installed in 85 RI and MA homes



- Four towns successfully completed the Community-Based Initiative
- Launched RI Energy Innovation Hub

RI Energy Efficiency

2017

COMMERCIAL HIGHLIGHTS



NEW CONSTRUCTION



RETROFIT



SMALL BUSINESS
DIRECT INSTALL

C&I End of Year - Numbers

New Construction



92.1%
of the annual
electric goal
(13,141 MWh)

Retrofit



115.2%
of the annual
electric goal
(89,378 MWh)

Small Business



106.8%
of the annual
electric goal
(12,956 MWh)



67.1%
of the annual gas goal
(35,952 MMBtu)



106.8%
of the annual gas goal
(200,732 MMBtu)

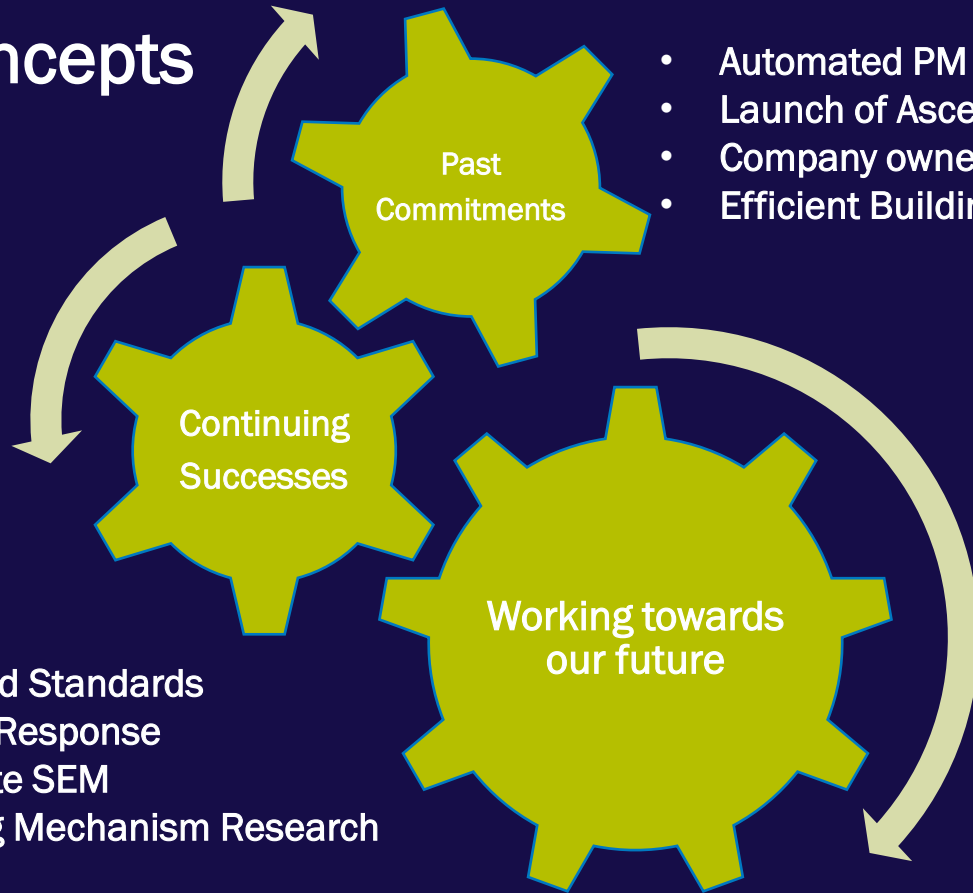


117.4% of
the annual gas goal
(4,273 MMBtu)

End of Year - Concepts

- Energy Smart Grocer
- Industrial Initiative
- SEMP
- Combined Heat & Power

- Codes and Standards
- Demand Response
- Investigate SEM
- Financing Mechanism Research



- Automated PM benchmarking
- Launch of Ascentium financing
- Company owned street lighting tariff
- Efficient Buildings Fund





Rhode Island Veterans Home
260,000SF Facility
Serves 208 Veterans
Opened November 2017

The project complies with the International Green Construction Code, and includes a 20% above code HVAC system, an integrated Building Monitoring System, Led lighting and daylight controls, condensing boilers and high efficiency energy recovery units among many other energy saving measures.



Savings
Electric Energy Savings:
481,409 kWh

Gas Energy Savings:
36,646 Therms

Customer Incentive
\$212,013.35

